

PLAN NOTES

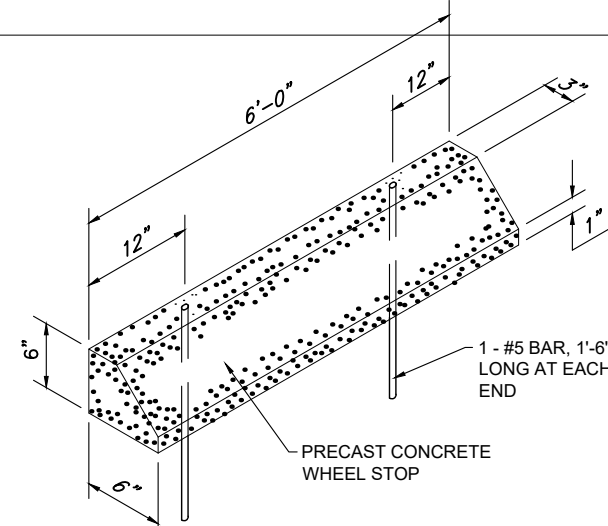
THE FOLLOWING ITEMS ARE NOT REVIEWED OR ACCEPTED BY BROWARD COUNTY:

1. BROWARD COUNTY TRAFFIC ENGINEERING DIVISION'S REVIEW DOES NOT INCLUDE A REVIEW AND ACCEPTANCE OF THE PROJECT'S DESIGN OR OPERATION. THESE ITEMS ARE TO BE REVIEWED AND APPROVED BY THE CITY ENGINEER.

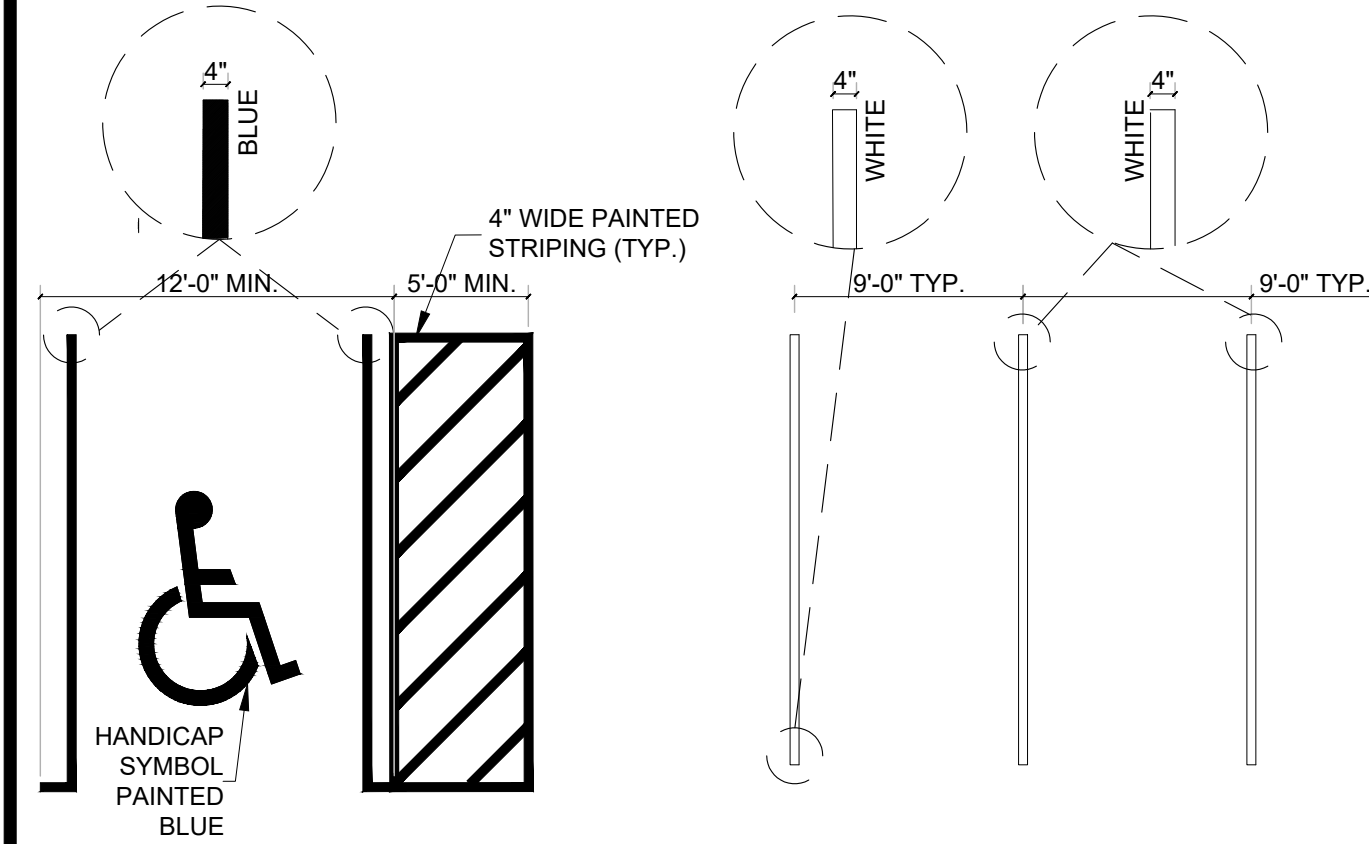
2. BROWARD COUNTY TRAFFIC ENGINEERING DIVISION DOES NOT REVIEW AND APPROVE, OR INSPECT AND ACCEPT THE FOLLOWING.

ITEMS FOR MAINTENANCE: PAVEMENT MARKINGS ON OR ADJACENT TO PAVER BRICKS, PAINTED ASPHALT, STAMPED ASPHALT OR PAVEMENT MARKINGS MADE OF PAVER BRICKS, RAISED INTERSECTIONS AND RELATED MARKINGS AND SIGNING, UN-WARRANTED MID-BLOCK CROSSWALKS AND RELATED MARKINGS AND SIGNING, UN-WARRANTED CROSSWALKS AND RELATED MARKINGS AND SIGNING, PAINTED/DECORATIVE CROSSWALKS, RAISED CROSSWALKS AND RELATED MARKINGS AND SIGNING, ADVANCED WARNING PAVEMENT MARKINGS FOR SPEED TABLES, BLINKER SIGNS, RECTANGULAR RAPID FLASHER BEACONS AND RELATED MARKINGS AND SIGNING, ON STREET PARKING AND RELATED MARKINGS AND SIGNING, IN-ROAD LIGHTING AND RELATED MARKINGS AND SIGNING, GREEN BIKE LINES, FLEXIBLE DELINEATORS, DECORATIVE SIGNS AND DECORATIVE SIGN POSTS, PLANTERS, ON-SITE PAVEMENT MARKINGS AND SIGNING, OFF-SITE PAVEMENT MARKINGS AND SIGNING IN RIGHT-OF-WAY THAT IS NOT DEDICATED FOR PUBLIC USE, SIDEWALK WORK OR ASPHALT WORK.

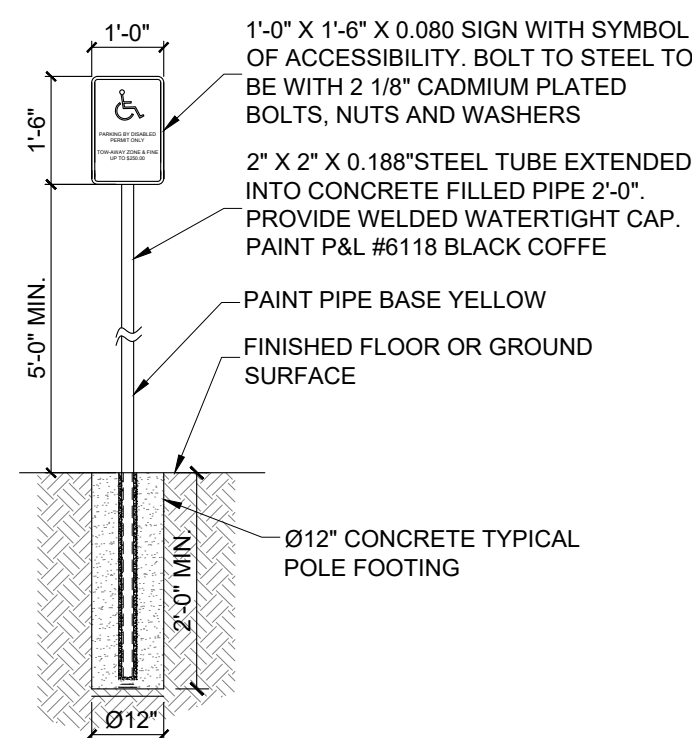
3. THE CITY ENGINEER IS RESPONSIBLE FOR THE REVIEW AND APPROVAL OF THE DESIGN AND OPERATION OF THE PROJECT, AND FOR THE INSPECTION AND ACCEPTANCE OF THE FOLLOWING ITEMS THAT WILL BE MAINTAINED BY THE CITY: PAVEMENT MARKINGS ON OR ADJACENT TO PAVER BRICKS, PAINTED ASPHALT, STAMPED ASPHALT OR PAVEMENT MARKINGS MADE OF PAVER BRICKS, PAVEMENT MARKINGS ON OR ADJACENT TO PAINTED ASPHALT, RAISED INTERSECTIONS AND RELATED MARKINGS AND SIGNING, UNWARRANTED MID-BLOCK CROSSWALKS AND RELATED MARKINGS AND SIGNING, PAINTED/DECORATIVE CROSSWALKS, RAISED CROSSWALKS AND RELATED MARKINGS AND SIGNING, ADVANCED WARNING PAVEMENT MARKINGS FOR SPEED TABLES, BLINKER SIGNS, RECTANGULAR RAPID FLASHER BEACONS AND RELATED MARKINGS AND SIGNING, ON-STREET PARKING AND RELATED MARKINGS AND SIGNING, IN-ROAD LIGHTING AND RELATED MARKINGS AND SIGNING, GREEN BIKE LINES, FLEXIBLE DELINEATORS, DECORATIVE SIGNS AND DECORATIVE SIGN POSTS, PLANTERS, ON-SITE PAVEMENT MARKINGS AND SIGNING, OFF-SITE PAVEMENT MARKINGS AND SIGNING IN RIGHT-OF-WAY THAT IS NOT DEDICATED FOR PUBLIC USE, SIDEWALK WORK AND ASPHALT WORK. ALL TRAFFIC CONTROL DEVICES MAINTAINED BY BROWARD COUNTY, THAT ARE REMOVED OR DAMAGED BY CONTRACTOR MUST BE REPLACED.



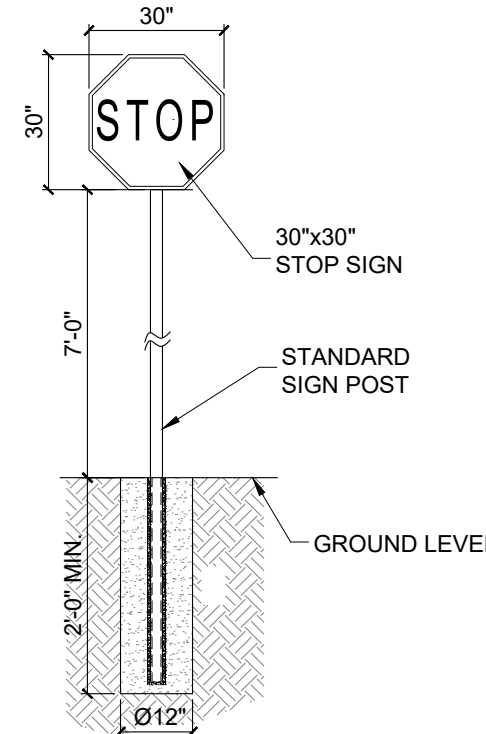
A PRECAST CONC. STOP WHEEL
DETAIL (TYP.) SCALE: N.T.S



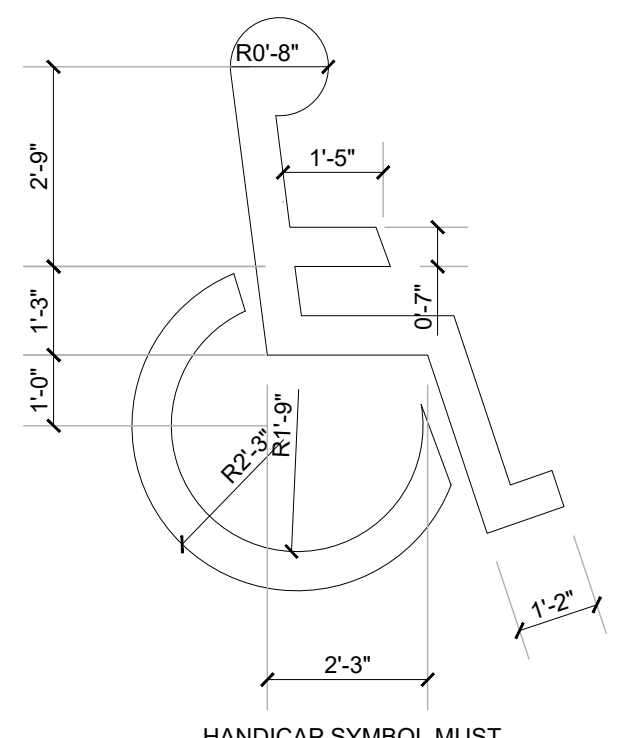
B PARKING STRIP
DETAIL TYP. SCALE: N.T.S



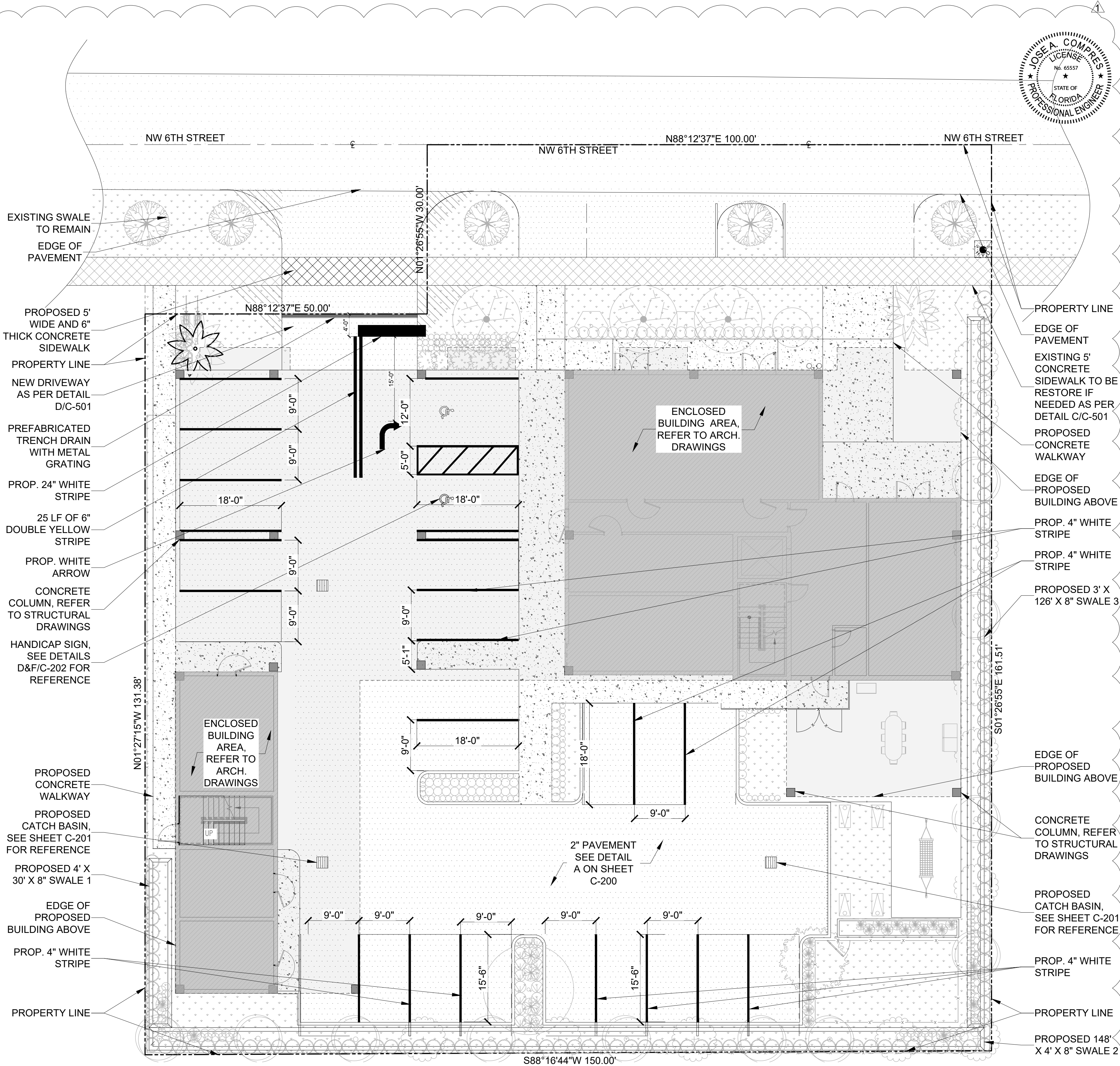
C HANDICAP PARKING STALL
SIGN DETAIL SCALE: N.T.S



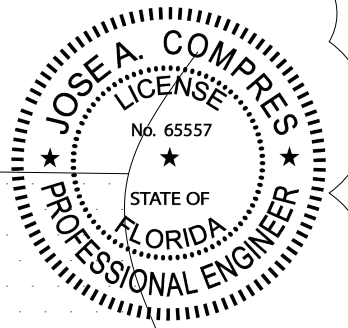
D STOP SIGN
DETAIL SCALE: N.T.S



E HANDICAP PARKING
SYMBOL DETAIL SCALE: N.T.S



F PAVEMENT MARKING & SIGNS PLAN
SCALE: 1"=10'



CONEMCO
ENGINEERING, INC.
DEIA CONEMCO Consultants
SBA 8(a) - Civil - Structural - MEP - CEI - Program Management - Land Surveyors

782 NW 42ND AVENUE UNIT 635
MIAMI, FL 33126
MAIN NUMBER 888-536-1536
CA # 2947

THIS ITEM HAS BEEN DIGITALLY SIGNED AND SEALED BY JOSE A. COMPRES ON THE DATE INDICATED IN THE SIGNATURE. PRINTED COPIES OF THIS DOCUMENT ARE NOT CONSIDERED SIGNED AND SEALED, AND THE SIGNATURE MUST BE VERIFIED ON ANY ELECTRONIC COPIES.

JOSE A. COMPRES, P.E.
FLORIDA P.E. LIC. # 65557

CONEMCO ENGINEERING, INC.

PROJECT NAME / ADDRESS:
**324 HAUS MIXED USE / NEW BUILDING - CIVIL PLANS
REDESIGN**
324 NW 6TH STREET, POMPAHO BEACH, FL 33060

CLIENT/OWNER:
AUSTIN FOX ARCHITECTURE
1754 E COMMERCIAL BLVD, FORT LAUDERDALE, FL 33334

REVISIONS	DATE
1. CITY COMM.	09-08-2025

DATE:	12/2/2025
SCALE:	AS SHOWN
DRAWN:	FP
CHECKED:	PS
APPVD:	JC
PROJECT ID:	FPV-C251004
CONTRACT NO:	-

SHEET NAME:
PAVEMENT MARKING & SIGNS PLAN

DRAWING NO. C-202
Sheet No. 7 OF 18
PZ22-12000032 02/03/2026